

# Sun City Computer Club

Windows SIG

October 11, 2022

**Questions, Comments, Suggestions welcomed at  
any time**

**Even Now**

- [Audio Recording of this session](#)
- Use the link above to access MP4 audio recording
- Audio Recording in Progress
- SIG attendees are required to be members of the chartered club sponsoring that SIG.  
Sun City Community Association By-law
- Sig leader – anyone?
- Topic Suggestions – plea(se)
- Your suggestions future presentations
- In person meetings

- Ever want to be a presenter??

**Presenter???**

- 96 vulnerabilities 13 critical 2 0-days
- Exchange flaws NOT fixed

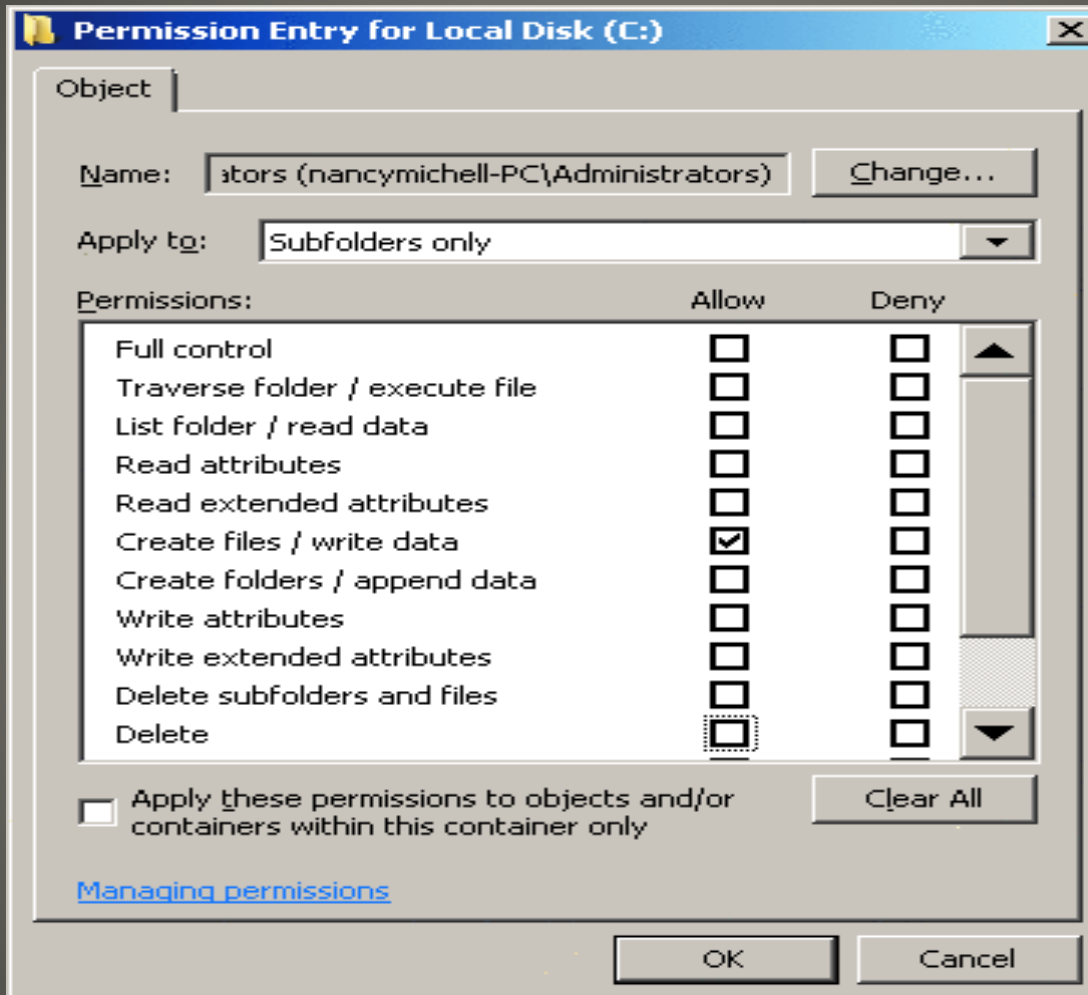
**Microsoft Update Tuesday**

- Phased Release
- Release Holds Safeguards
  - Intel Smart Sound Technology driver
  - Printers using Microsoft IPP class drivers
  - Microsoft investigating slow copy issues
- 22H2 improvements
  - Snap layouts, Focus sessions, Android App store, File Explorer tabs,

**Windows 11 22H2**

- Upgrade Windows 10 -> Windows 11
  - Files already copied
- Copy vs Move
- Security
  - Principal (process or thread) acting on Object File, Directory, Registry entry, ...
  - Security Descriptors
    - Owner
    - Users & Groups Specified permissions
- Date Integrity
- Custom Permissions & ACLs

**Move copy windows files**



# Permissions

- Data structure
- Access ? ACL vs Principal's permissions
- Access Control Entries (ACE)
- Order is important
  - Explicit Denies
  - Explicit Allows
  - General (Group) denies
  - General (Group) allows

## Access Control Lists



- Data structure
- Access ? ACL vs Principal's permissions
- Access Control Entries (ACE)
- Order is important
  - Explicit Denies
  - Explicit Allows
  - General (Group) denies
  - General (Group) allows
- System Identifier (SID)

## Access Control Lists

- UNIQUE across devices
- Access token
- robocopy c:\home e:\Home \e \sec  
Copy from c:\home to e:\home  
\e include subdirectories  
\sec preserve security

<http://technet2.microsoft.com/windowsserver2008/en/library/d4c6e8e9-fcb3-4a4a-9d04-2d8c367b63541033.msp?mfr=true>

Double check AFTER  
for files that could not be accessed

**Security IDentifier**

- Image old drive to new drive
- Upgrade to Windows 11

**New Machine**

- <http://technet.microsoft.com/en-us/sysinternals/bb897332.aspx>
- Creates list of ALL NTFS permissions, ACLs, ACEs
- For more information
- In CMD window as an Administrator
- Robocopy /?

- C:\WINDOWS\system32>robocopy /?
- -----
- ROBOCOPY :: Robust File Copy for Windows
- -----
- Started : Wednesday, October 12, 2022 10:36:31 AM
- Usage :: ROBOCOPY source destination [file [file]...] [options]
- source :: Source Directory (drive:\path or \\server\share\path).
- destination :: Destination Dir (drive:\path or \\server\share\path).
- file :: File(s) to copy (names/wildcards: default is "\*.\*").
- ::
- :: Copy options :
- ::
- /S :: copy Subdirectories, but not empty ones.
- /E :: copy subdirectories, including Empty ones.
- /LEV:n :: only copy the top n LEVELs of the source directory tree.
- /Z :: copy files in restartable mode.
- /B :: copy files in Backup mode.
- /ZB :: use restartable mode; if access denied use Backup mode.
- /J :: copy using unbuffered I/O (recommended for large files).
- /EFSRAW :: copy all encrypted files in EFS RAW mode.
- /COPY:copyflag[s] :: what to COPY for files (default is /COPY:DAT).
- (copyflags : D=Data, A=Attributes, T=Timestamps, X=Skip alt data streams).
- (S=Security=NTFS ACLs, O=Owner info, U=aUditing info).
- /SEC :: copy files with SECurity (equivalent to /COPY:DATS).
- /COPYALL :: COPY ALL file info (equivalent to /COPY:DATSOU).
- /NOCOPY :: COPY NO file info (useful with /PURGE).
- /SECFIX :: FIX file SECurity on all files, even skipped files.
- /TIMFIX :: FIX file TIMes on all files, even skipped files.
- /PURGE :: delete dest files/dirs that no longer exist in source.
- /MIR :: MIRror a directory tree (equivalent to /E plus /PURGE).
- /MOV :: MOVE files (delete from source after copying).
- /MOVE :: MOVE files AND dirs (delete from source after copying).

- /256 :: turn off very long path (> 256 characters) support.



**Windows 11 22H2**

- None of us are as experienced as all of us
- Awareness, Preparedness, Understanding
- Participate
- Topic Suggestions
- Questions: [scccwindows@gmail.com](mailto:scccwindows@gmail.com)

