

COMMUNITY STANDARDS
RESIDENTIAL
EXTERIOR PAINT

SERIES 100

Table of Contents

Colors may appear differently on each monitor.

Guidelines for Exterior Paint

Series 100

Series 200

Series 200 Alternates

Models

Series 300

Series 400

*Interior Paint

Use the Modifications Committee Application **Form B-2** when requesting approval for changes in exterior paint.

- Cottage Homes: Must submit a B-2 Form signed by both home owners every time. Can only be painted with the original color scheme and both sides shall be painted in their entirety at the same time with the same color).
- Custom Homes: Low-light-reflective colors are preferred.
- All Other Homes: The home owner may repaint the exterior of the home, entirely or in part, with existing colors.

The following conditions are the only limitations to All Other Home owner's choice when changing colors:

- The colors designated for Stucco, Garage, Fascia, Columns, Pop-outs, Front Door and Shutters or Gable Vents are restricted to the use designated.
- Semi-gloss shall be used on the garage and the front door. Flat or low-sheen paint shall be used on all the stucco. Flat or semi-gloss may be used on all remaining areas.
- 100 series homes shall use two or three colors. 200, 300 and 400 series homes shall use no less than three colors with a stained front door counting as one of the colors.
- Garage doors can be painted with the original color, or the current primary color of the house.

The Modifications Committee will consider paint colors that are close to those available in the Pulte/Del Webb color palette. Color samples need to be mapped to approved colors and submitted with the application. They will remain in the property folder for the home.

SERIES 100

Angelina
Berry
Berry
Brazos
Cambridge
Colorado
Cowan
Cypress
Lavaca
Medina
Pecos
Pedernales
Rio Grande
Sabine
Salado
San Gabriel
San Jacinto
San Marcos
Trinity
Wichita

SERIES 200

Austin
Bowie
Bowie
Burleson
Burnet
Chisholm
Crockett
Dickinson
Driskill
Hays
Houston
Lamar
Littlefield
Long
Maverick
Milam
Rayburn
Seguin
Travis
Williamson

SERIES 300

Andover
Arlington
Arlington
Bayberry
Bluebell
Bluebonnet
Cambridge
Coronado
Cortez
DeLeon
DeSoto
DeVaca
LaSalle
Lexington
Llano
Magnolia
Monroe
Monterey
Newport
Primrose
San Saba
Savannah

SERIES 400

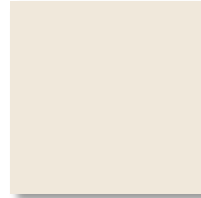
Abbeyville
Barringer
Bluffton Cottage
Breckenridge
Castle Rock
Chamberlain
Copper Ridge
Cumberland Hall
Gray Myst
Jackson
Kendall Park
Longstreet
Magnolia II
Mariposa
Martin Ray
Meade
Morningside Lane
Napa Valley
Noir Coast
Pemberton
Pickett
Pine Spring
Sheridan
Sonoma Cove
Steel Creek
Surrey Crest
Taft Street
Tangerly Oak
Vernon Hill

Series 100

Click on # of Scheme you wish to view.

Scheme	<u>#1</u>	<u>#2</u>	<u>#3</u>	<u>#4</u>	<u>#5</u>	<u>#6</u>	<u>#7</u>
Stucco	<u>Bandera</u>	<u>Meadowlark</u>	<u>Tumbleweed</u>	<u>Wildcat</u>	<u>Tumbleweed</u>	<u>Mushroom</u>	<u>Sunset</u>
Trim	<u>Breakers</u>	<u>Tumbleweed</u>	<u>Beaver Creek</u>	<u>Moose</u>	<u>Pecan</u>	<u>Pecan</u>	<u>Hickory</u>
Trim	<u>Brushy</u>	<u>Meadowlark</u>	<u>Tumbleweed</u>	<u>Wildcat</u>	<u>Mesa Brown</u>	<u>Juniper</u>	<u>Cactus</u>
Trim	<u>Reed</u>				<u>Tumbleweed</u>	<u>Beaver Creek</u>	<u>Cowan</u>
Trim	<u>Bandera</u>					<u>Mushroom</u>	

Series 100 Scheme 1



Bandera
Stucco
Trim



Breakers
Trim



Brushy
Trim

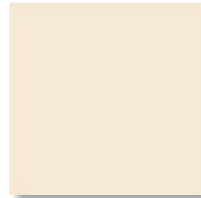


Reed
Trim

Series 100 Scheme 2

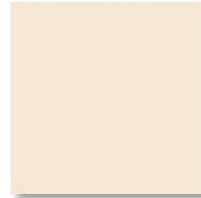


Meadowlark
Stucco
Trim



Tumbleweed
Trim

Series 100 Scheme 3



Tumbleweed
Stucco



Beaver Creek
Trim

Series 100 Scheme 4

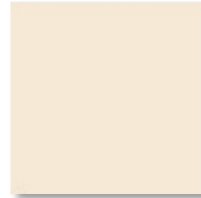


Wildcat
Stucco

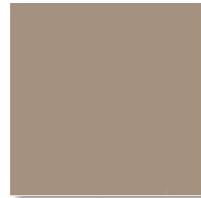


Moose
Trim

Series 100 Scheme 5



Tumbleweed
Stucco
Trim

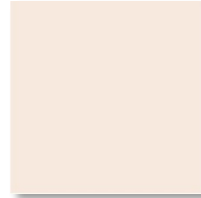


Pecan
Trim



Mesa Brown
Trim

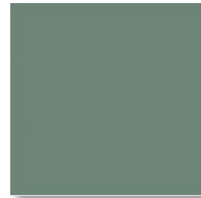
Series 100 Scheme 6



Mushroom
Stucco
Trim



Pecan
Trim

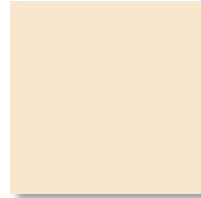


Juniper
Trim



Beaver Creek
Trim

Series 100 Scheme 7



Sunset
Stucco



Hickory
Trim



Cactus
Trim



Cowan
Trim

Initial Interior Paint Colors

100 and 200 Series homes:

- walls and ceilings are Linen or Summertime
- trim, baseboards, and doors are White Chip

300 Series homes:

- walls and ceilings are Summertime
- trim, baseboards, and doors are Decorator White

400 Series homes:

- walls and ceilings are Natural Choice

All interior paint was water based.